

Tejada

Barranco de Tejada

Info : La qualité de cette description n'a pas encore été vérifiée ou a été jugée mauvaise.

Si vous connaissez ce canyon, merci de vérifier cette description et de déposer un rapport avec une note pour cette description en utilisant Rapports +*Nouveau rapport*. Si vous constatez une erreur, merci de nous en faire part ou de rejoindre la communauté afin de corriger vous-même cette description.

Créer: 2024-06-05 22:47:21

Mettre à jour: 2026-03-14 22:01:20

Imprimer: 2026-05-30 10:05:14

Pays: España / Spain **Région:** Castilla y León **Sous-région:** Burgos **Ville:** Tejada

Difficulté: facile

Niveau: v2 a1 I

Temps total: 1h45

Temps approche: 5min

Temps tour: 1h

Temps de retour: 40min

Altitude d'entrée: m

Altitude de sortie: m

Altitude du delta:

Longueur du canyon: 600m

Rapelle le plus haut: 11m

Nombre de rappelles: 7

Transport:

Type de roche:

Zone de prise d'eau: km²

Saison:

Orientation:

Meilleur moment:

Évaluation: ★ 0 ()

Info: ★ 0 ()

Belay: ★ 0 ()

Spécialités:

Matériel:

Résumé: (traduction alternative)

It is a short canyon in length and of scarce verticality that does not present many difficulties, at the beginning of summer it loses all its flow and dries up, better to make it after rains or at the beginning of the season.

The current state of equipment (2023) is regular.

It consists of two sections, a first section more open and little vertical where there are a series of small projections (some equipped) that run between small pools and stretches of walking on the riverbed and the high vegetation.

And a second part more boxed and vertical to leave the ravine where there are several rappels.

Collector canyon, recommended if you are in the area or for the collection.

The ravine is located within the Sabinares de Arlanza Natural Park. Consult possible regulations.

Hydrologie: (traduction alternative)

In the first part, before the R4, you can exit the riverbed on the right.

Accès: (traduction alternative)

We arrive to Lerma on the A1 and here we turn to the BU900. Before reaching Quintanilla we take the detour to the right on the BU-V-9004. Soon we arrive at Tejada.

We cross the village and continue along a track (Barriosuso road) until the end in a poplar grove.

Approche: (traduction alternative)

From the poplar grove you can see the entrance to the ravine. It is to follow the path that passes by the old dam.

Tour: (traduction alternative)

A simple descent, with a first part of skills and then the most closed area with rappels.

Retour: (traduction alternative)

At the exit of the ravine, you can return along the left or right slope.

Coordonnées:

Départ du Canyon [41.9607 -3.5162](#)

Rapports:

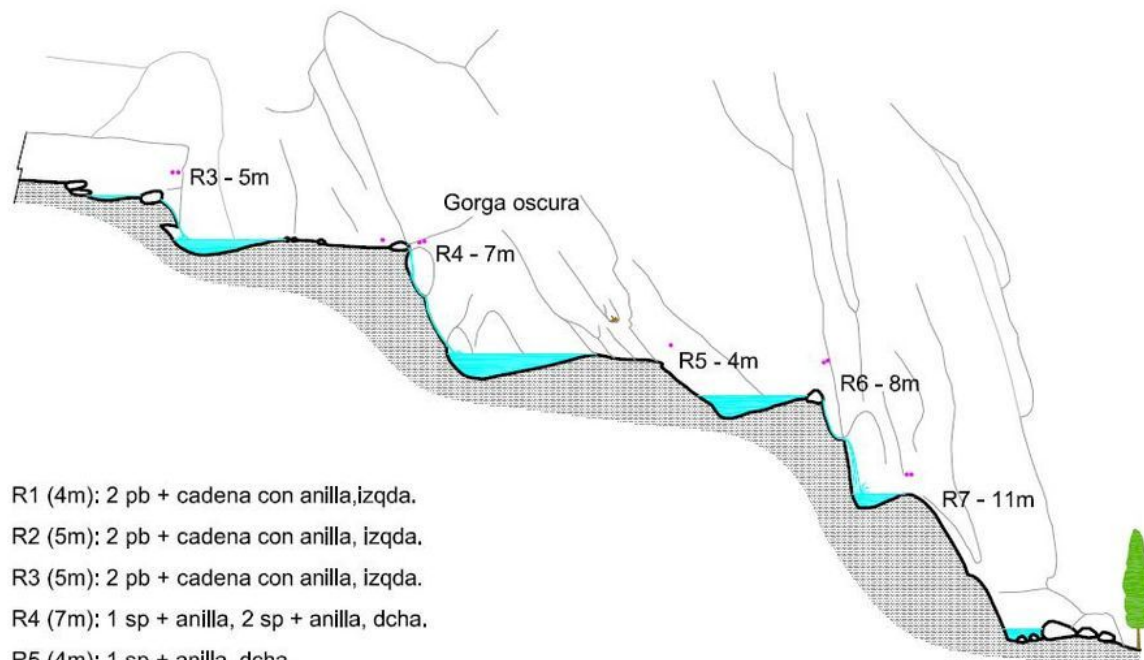
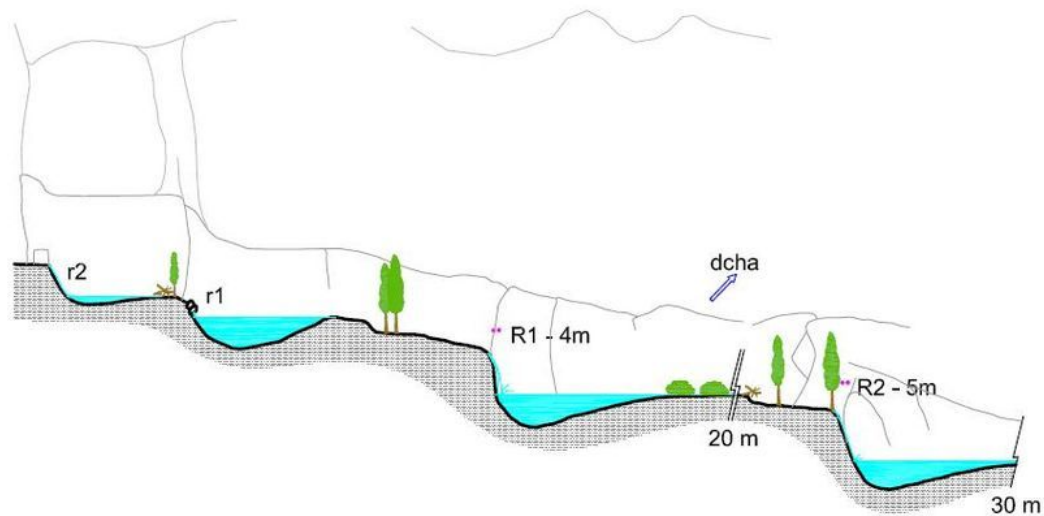
2024-06-16 | System User | |📖|📍| |

Información: Partes de la descripción del cañón se han importado automáticamente. Concretamente, los campos Verticalidad, Acuáticos, Seriedad, Resumen, Hidrología, Acceso, Acceso, Recorrido, Regreso, Tiempo acceso, Tiempo regreso, Cantidad rapells, Longitud del cañón, Ruta GPS, Topografía de <https://www.docuwiki.infobarrancos.es/doku.php?id=barrancos:burgos:tejada>

2023-03-09 | System User | |📖|📍| |

Daten importiert von <https://ropewiki.com/Tejada>

Barranco de TEJADA (Burgos)



- R1 (4m): 2 pb + cadena con anilla, izqda.
- R2 (5m): 2 pb + cadena con anilla, izqda.
- R3 (5m): 2 pb + cadena con anilla, izqda.
- R4 (7m): 1 sp + anilla, 2 sp + anilla, dcha.
- R5 (4m): 1 sp + anilla, dcha.
- R6 (8m): 2 sp + anilla, dcha. Varlos sp viejos.
- R7 (11m): 2 sp + anilla, izqda. Varios sp viejos.



Topo: J. del Álamo
Grupo Espeleológico Ribereño