

# Tejada

Barranco de Tejada

**Info: The quality of this description has not been checked yet or was rated bad.**

If you know this canyon, please check this description and file a report with a rating for this description using *Reports* -> *+New Report*. Should you notice any error, please let us know or join the community in order to fix this description yourself.

**Create:** 2024-06-05 22:47:21

**Update:** 2026-03-14 22:01:20

**Print:** 2026-06-27 03:06:21

**Country:** España / Spain **Region:** Castilla y León **Subregion:** Burgos **Town:** Tejada

**Difficulty:** easy

**Grading:** v2 a1 I

**Total time:** 1h45

**Approachtime:** 5min

**Tourtime:** 1h

**Returntime:** 40min

**Altitude entry:** m

**Altitude exit:** m

**Delta Altitude:**

**Canyon length:** 600m

**Highest rapell:** 11m

**Amount rapells:** 7

**Transport:**

**Rock type:**

**Drainage area:** km<sup>2</sup>

**Season:**

**Orientation:**

**Best Time:**

**Rating:** ★ 0 ()

**Info:** ★ 0 ()

**Belay:** ★ 0 ()

**Specialities:**

**Gear:**

**Summary:** (machine translated)

It is a short canyon in length and of scarce verticality that does not present many difficulties, at the beginning of summer it loses all its flow and dries up, better to make it after rains or at the beginning of the season.

The current state of equipment (2023) is regular.

It consists of two sections, a first section more open and little vertical where there are a series of small projections (some equipped) that run between small pools and stretches of walking on the riverbed and the high vegetation.

And a second part more boxed and vertical to leave the ravine where there are several rappels.

Collector canyon, recommended if you are in the area or for the collection.

The ravine is located within the Sabinares de Arlanza Natural Park. Consult possible regulations.

**Hydrology:** (machine translated)

In the first part, before the R4, you can exit the riverbed on the right.

**Access:** (machine translated)

We arrive to Lerma on the A1 and here we turn to the BU900. Before reaching Quintanilla we take the detour to the right on the BU-V-9004. Soon we arrive at Tejada.

We cross the village and continue along a track (Barriosuso road) until the end in a poplar grove.

**Approach:** (machine translated)

From the poplar grove you can see the entrance to the ravine. It is to follow the path that passes by the old dam.

**Tour:** (machine translated)

A simple descent, with a first part of skills and then the most closed area with rappels.

**Return:** (machine translated)

At the exit of the ravine, you can return along the left or right slope.

**Coordinates:**

Canyon Start [41.9607 -3.5162](#)

## Reports:

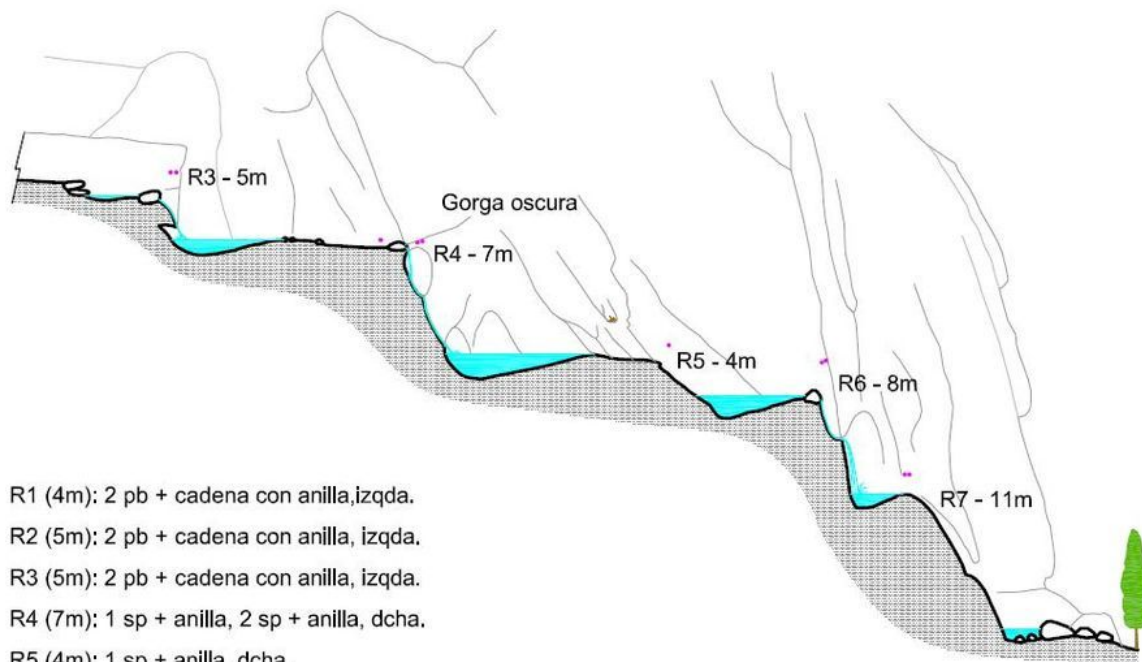
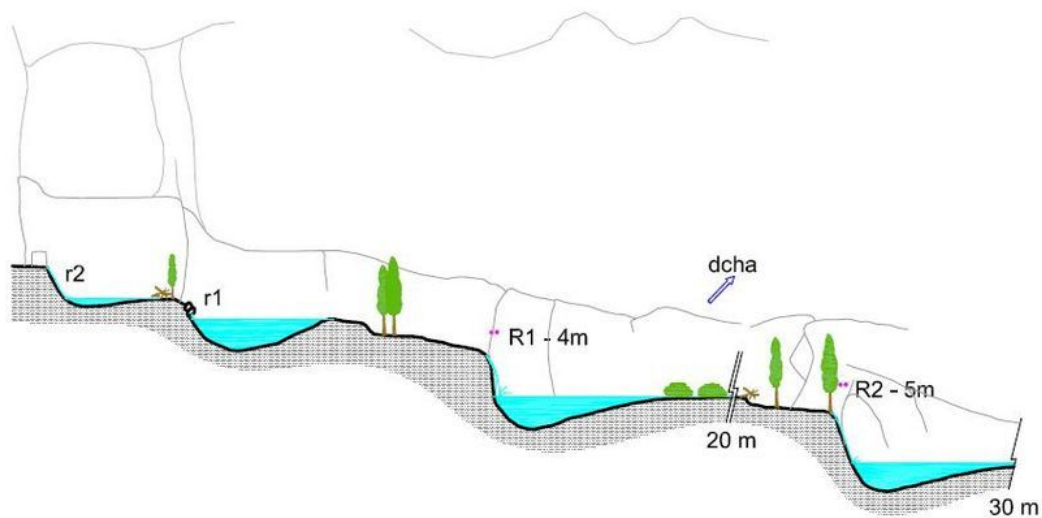
2024-06-16 | System User | |📖|📍| |

Información: Partes de la descripción del cañón se han importado automáticamente. Concretamente, los campos Verticalidad, Acuáticos, Seriedad, Resumen, Hidrología, Acceso, Acceso, Recorrido, Regreso, Tiempo acceso, Tiempo regreso, Cantidad rapells, Longitud del cañón, Ruta GPS, Topografía de <https://www.docuwiki.infobarrancos.es/doku.php?id=barrancos:burgos:tejada>

2023-03-09 | System User | |📖|📍| |

Daten importiert von <https://ropewiki.com/Tejada>

## Barranco de TEJADA (Burgos)



- R1 (4m): 2 pb + cadena con anilla, izqda.
- R2 (5m): 2 pb + cadena con anilla, izqda.
- R3 (5m): 2 pb + cadena con anilla, izqda.
- R4 (7m): 1 sp + anilla, 2 sp + anilla, dcha.
- R5 (4m): 1 sp + anilla, dcha.
- R6 (8m): 2 sp + anilla, dcha. Varlos sp viejos.
- R7 (11m): 2 sp + anilla, izqda. Varios sp viejos.



Topo: J. del Álamo  
Grupo Espeleológico Ribereño