

Oo (inférieur)

Neste d'Oo

Create: 2023-11-20 21:19:32	Update: 2026-03-14 22:15:07	Print: 2026-06-27 03:06:59
Country: France Region: Occitanie Subregion: Haute-Garonne / Upper Garonne Town: Oô		
Difficulty: not as difficult	Grading: v3 a3 I	Total time: 3h50
Approachtime: 1h	Tourtime: 2h30	Returtime: 20min
Altitude entry: 1450m	Altitude exit: 1210m	Delta Altitude: 240m
Canyon length: 1000m	Highest rapell: 25m	Amount rapells: 11
Transport:	Rock type:	Drainage area: km ²
Season: June - August	Orientation:	Best Time:
Rating: ★ 3.4 (2)	Info: ★ 3 (1)	Belay: ★ 3 (1)
Specialities:		
Gear:		
Summary: (machine translated) Beautiful canyon, very aquatic because it receives all the water from the lake of Oô. During the summer it is an easy descent without great verticals and with the possibility of multiple jumps and slides.		
Hydrology: Diffíciles		
Access: (machine translated) We must reach Bagnères de Luchon from the French side by the D125 or from Spain by the Portillon from Bossost by the N141. At the exit of Bagnères de Luchon north we must turn left on the D618 towards Arreau and Peyresourde. Arriving at Cazeaux turn left on the D76 towards the commune of Oô. Cross the village and continue towards Granges d'Astau and Lac d'Oô. At the end of the road there is a parking lot.		
Approach: (machine translated) We will leave by the path towards the Espingo refuge, almost to the Lac d'Oô refuge. At about 1400m altitude there is a path to the right of EDF for a water intake. We will continue until we reach the river		
Tour: (machine translated) A somewhat slippery descent full of small rappels and abseilings until the final zone, where we will have the highest points.		
Return: (machine translated) After the footbridge and the last rappel, we will leave by a path on the right.		
Coordinates: Canyon Start 42.7496 0.4927 Canyon End 42.7529 0.4972 Unknown Parking 42.7640 0.5017		

Reports:

2025-07-19 | Clemens Krabacher | ★★☆☆ | 📖★★★ | 📍★★★ | 🌊 Normal | 🟢 Completed

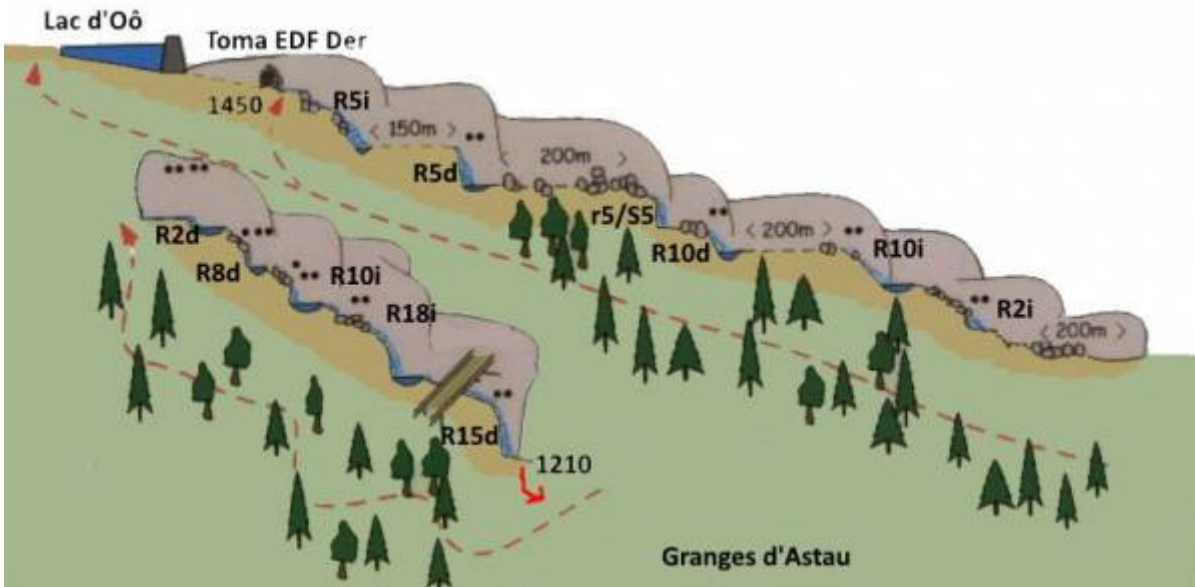
Only walked the lower part - access via the path on the orographic left side (approx. 30' from the small bridge) - heavily commercialized - many hanging ropes and bypasses built in - short but rewarding (machine translated)

2024-06-16 | System User | 📖 | 📍 | |

Información: Partes de la descripción del cañón se han importado automáticamente. Concretamente, los campos Resumen, Hidrología, Acceso, Acceso, Recorrido, Regreso, Cantidad rapells, Temporada start, Temporada end, Ruta GPS, Topografía de https://www.docuwiki.infobarrancos.es/doku.php?id=barrancosfra:hauteгарonne:oo_inf

2023-03-09 | System User | ★★☆☆ | 📖 | 📍 | |

Daten importiert von <https://www.descente-canyon.com/canyoning/canyon/22552/Oo-inferieur.html>



Importado de infobarrancos.es